

Test Your Knowledge!



[07:42:20] HR 92 PVC 0 STindx 0.2 QTc 483 ΔQTd 66 QT 392 SpO₂ 95 Perf 0.59

N N N N N N N N N N N N N N N

V2
1 mV
EASI

II
1 mV
EASI

Correctly label the above strip.

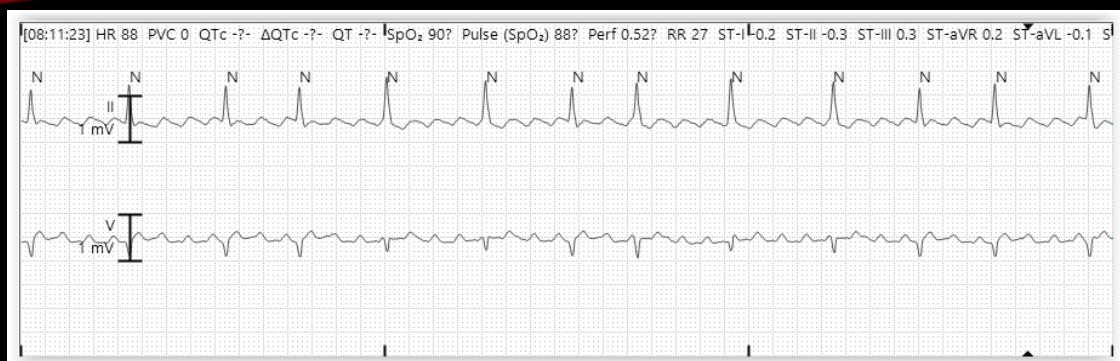
Atrial Fibrillation with CVR

The rhythm is irregular with a fibrillating baseline. Sometimes people mistake the fibrillating baseline as P waves but P waves should be a consistent shape and a consistent distance from the QRS each time.

HR: 92

PR: NA

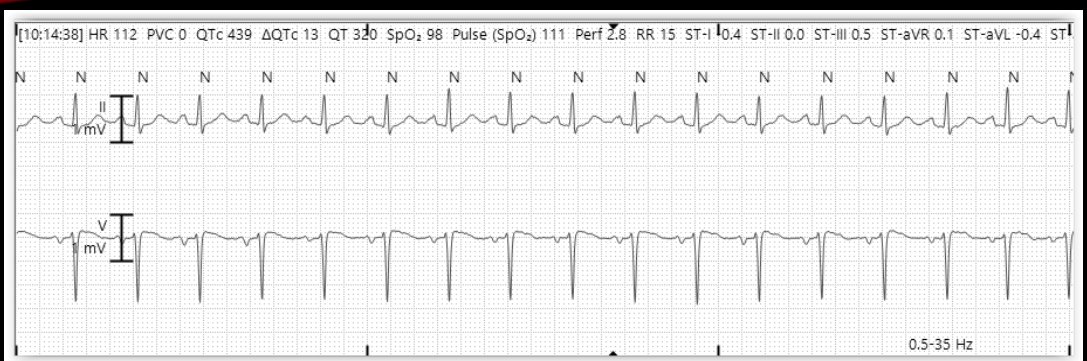
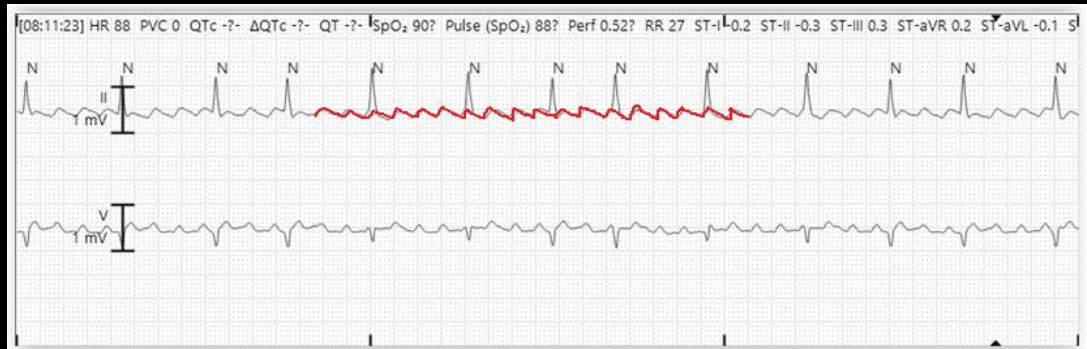
QRS: .10



Correctly label the above strip.

Atrial Flutter

The rhythm is irregular with a saw-tooth baseline. The atrial rate is 300 bpm which falls within the 250-350 range for atrial flutter. The ventricular rate is 88bpm.



Correctly label the above strip.

Sinus Tachycardia

The heart rate is > 100 bpm. The rhythm is regular and there is a P wave prior to each QRS. The PR and QRS measurements are within normal range.

HR 112 bpm

PR .18

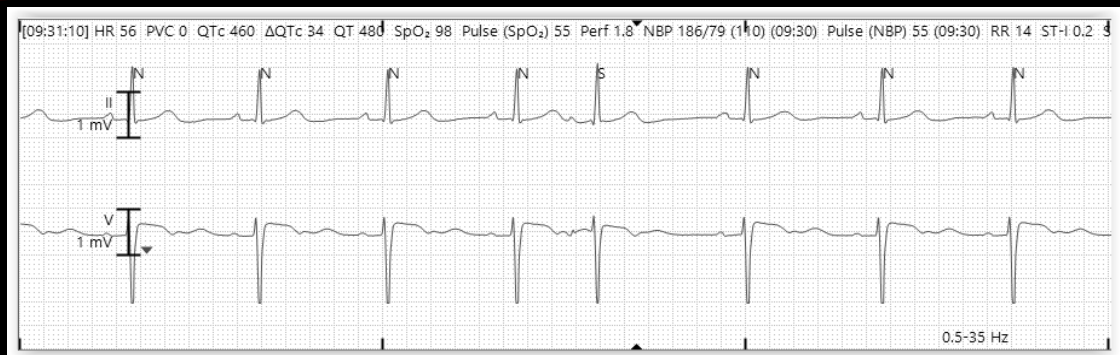
QRS .08



Correctly label the above strip.

Onset of SVT

The patient is initially in Sinus Rhythm at a rate of 67 bpm. The rate then rapidly increases to a rate of 150 bpm. The sudden increase in HR is not indicative of Sinus Tachycardia. The QRS remains narrow which rules out Ventricular Tachycardia.



Correctly label the above strip.

Sinus Bradycardia with one PAC

There is a P wave prior to each QRS. The heart rate is 56 bpm. The rhythm is regular until the PAC. The PAC is early, has a narrow QRS, and the shape of the P wave is slightly different than the others.

