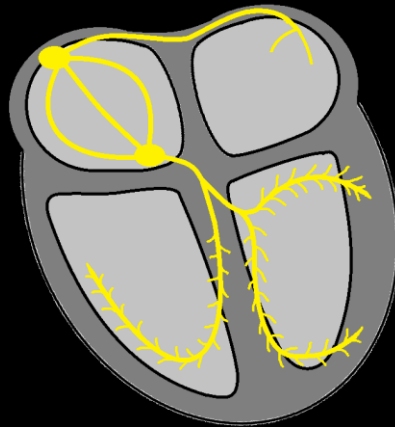


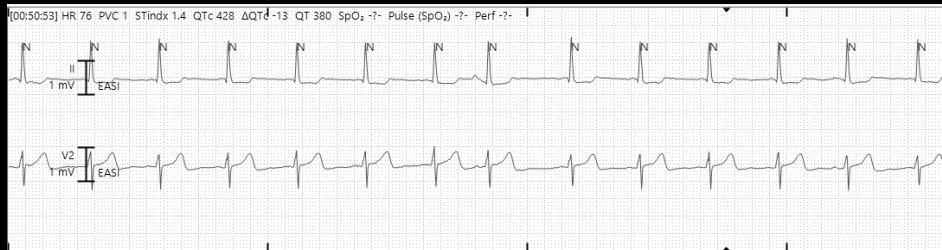
Atrial Rhythms

Premature Atrial Contractions

- Early P wave and QRS
- P Wave has different morphology
 - Round, Peaked, Notched, etc.
- Usually narrow QRS
- Noncompensatory Pause
- Atrial Bigeminy



Premature Atrial Contraction

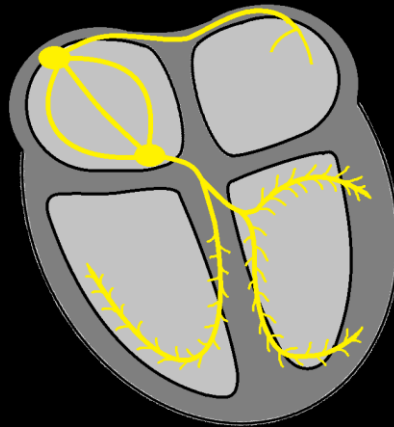


Wandering Atrial Pacemaker

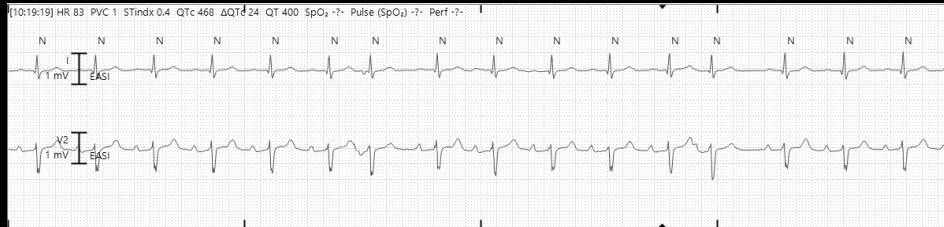
- 3 or more different P wave morphologies
- Irregular R-R intervals
- P wave for every QRS (1:1 ratio)

Multifocal Atrial Tachycardia (MAT)

- HR > 100 bpm

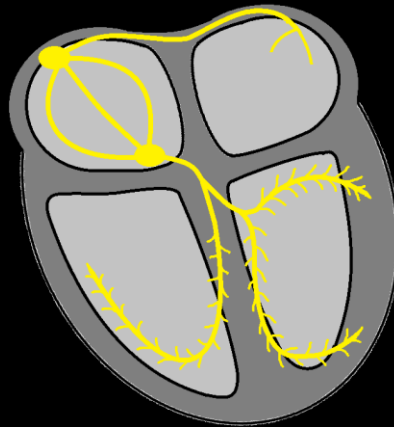


Wandering Atrial Pacemaker

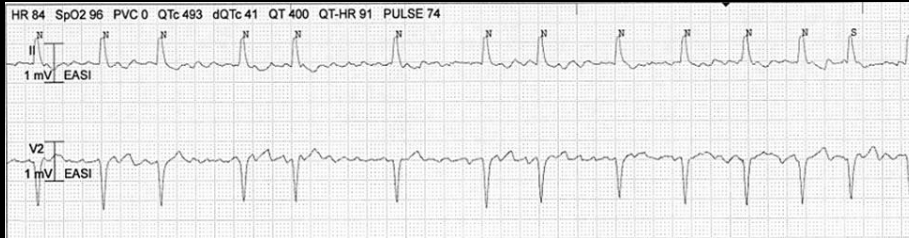


Atrial Fibrillation

- Atrial Rate >350 bpm or not measurable
- No P waves
- Fibrillating baseline
- Relatively narrow QRS
- Irregular R-R intervals
- Ventricular Rate will vary
 - RVR > 100 bpm
 - CVR 60-100 bpm
 - SVR < 60 bpm

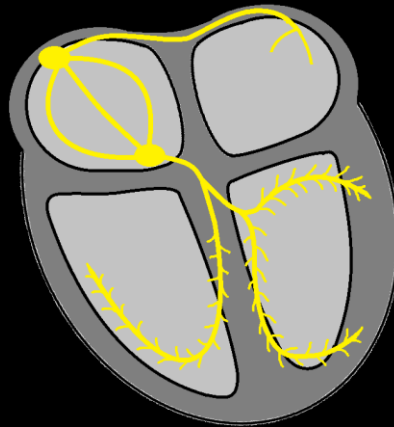


Atrial Fibrillation

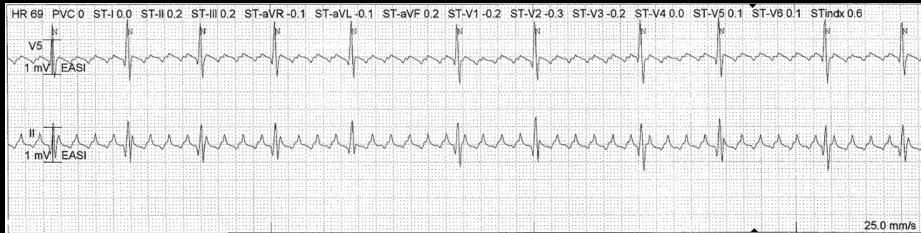


Atrial Flutter

- Atrial Rate 250-350 bpm
- No P waves
- Saw-toothed baseline
- Regular or Irregular R-R intervals
- Variable AV Conduction (2:1, 3:1, 4:1)
- Ventricular Rate will vary
 - RVR > 100 bpm
 - CVR 60-100 bpm
 - SVR < 60 bpm

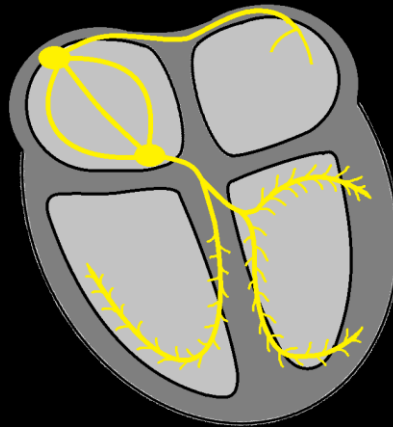


Atrial Flutter

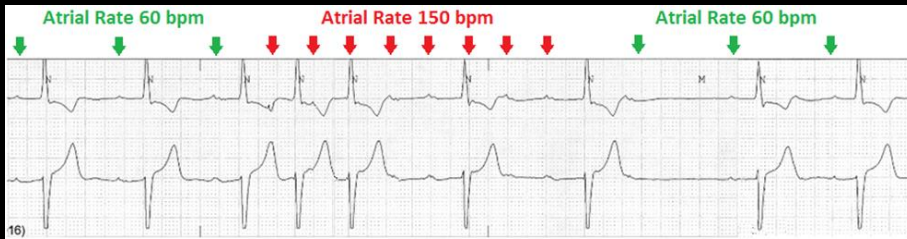


Atrial Tachycardia

- Atrial Rate 150-250 bpm
- Regular or Irregular R-R intervals
- AV Conduction may be 1:1 or variable if block is present.
- Ventricular Rate will vary
 - RVR > 100 bpm
 - CVR 60-100 bpm
 - SVR < 60 bpm

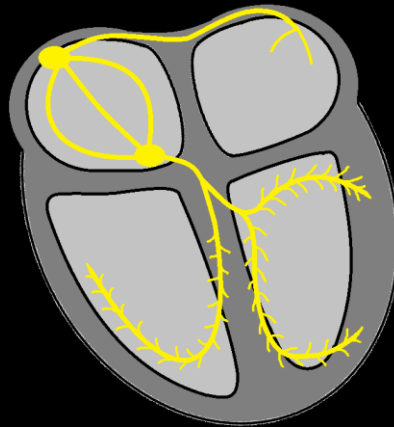


Atrial Tachycardia



Supraventricular Tachycardia (SVT)

- Ventricular Rate usually > 150 bpm
- Regular R-R intervals
- Relatively Narrow QRS
- Rhythm of Atrial Origin
 - Sinus Tachycardia
 - Atrial Fibrillation
 - Atrial Flutter
 - Atrial Tachycardia
 - Junctional Tachycardia
 - Other Reentrant Tachycardias



Supraventricular Tachycardia (SVT)

