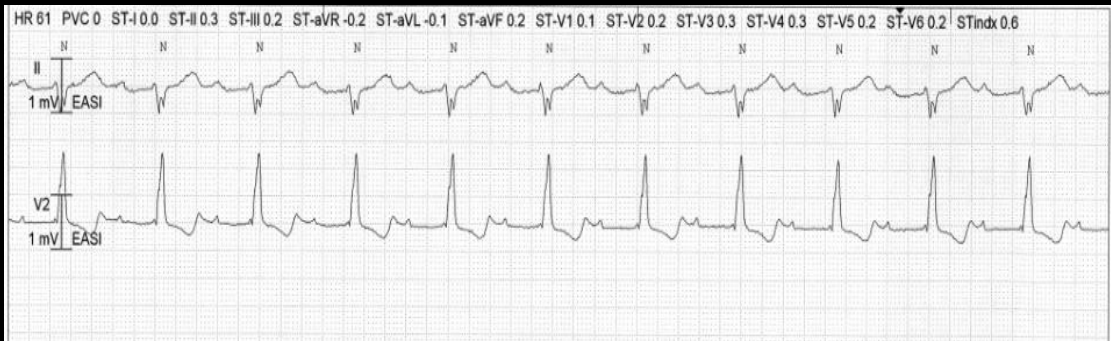


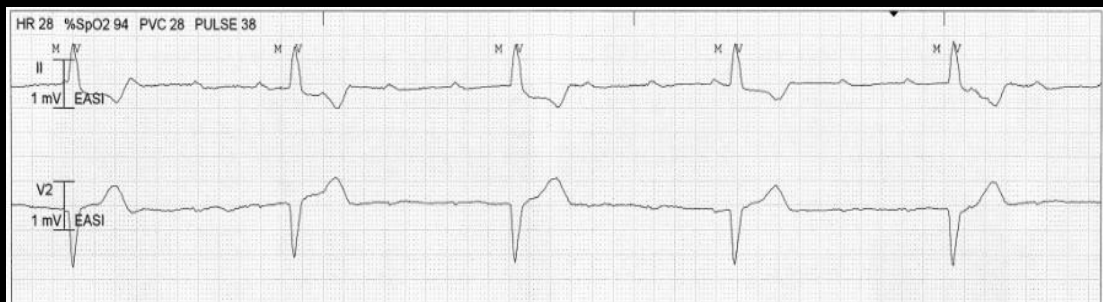
Test Your Knowledge!



Correctly label the above strip.

Sinus Rhythm with 1° AV Block

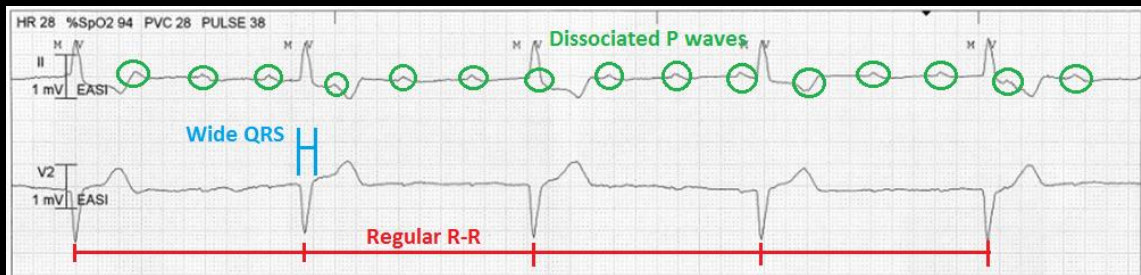
Normal PR should be $\leq .20$ seconds. The PR in this strip is .32 seconds which means the electrical impulse was delayed through the AV Node.



Correctly label the above strip.

3° AV Block with Ventricular Escape Rhythm

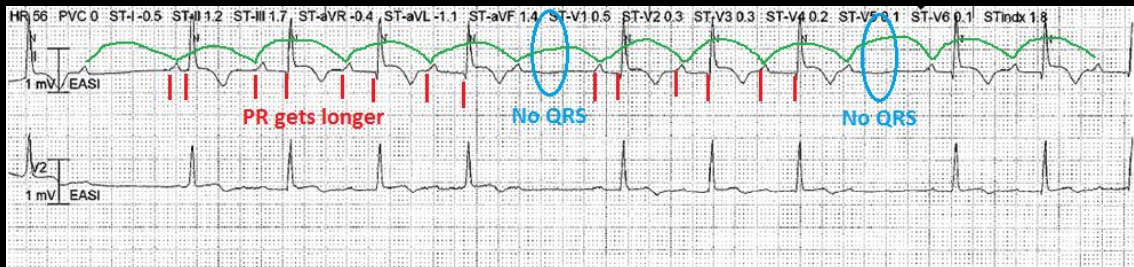
There is no consistent PR and the P waves seem to float through the QRS complexes. The R-Rs are completely regular which means this is an escape rhythm and the P waves are dissociated. The escape rhythm is Ventricular (IVR) because the QRS complexes are wide and 28 bpm.



Correctly label the above strip.

2° AV Block Type I

The PR gets progressively longer until the AV Node blocks the impulse completely resulting in no QRS. The P waves all map out and the R-Rs are irregular where the block is present.



Correctly label the above strip.

Ventricular Standstill into Sinus Rhythm

The first half of the strip only shows P waves. This means the SA Node is continuing to pace but the AV Node is blocking them before they reach the ventricles.

