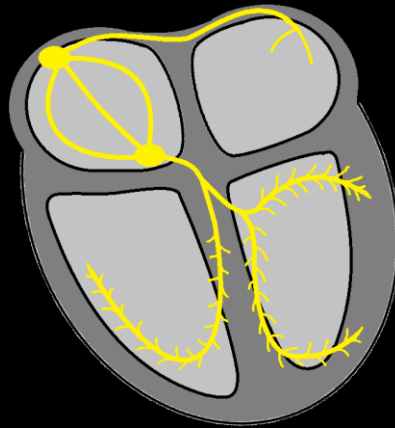


Sinus Rhythm

Sinus Rhythm

- HR between 60-100 bpm
- Regular R-R interval
- P wave for every QRS (1:1 ratio)
- PR between .12-.20 sec
- QRS between .06-.10 sec
- QT between .36-.44 sec

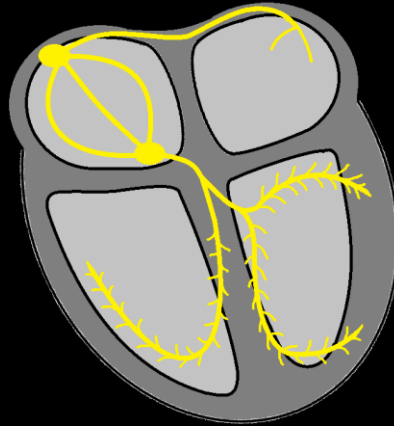


Sinus Rhythm

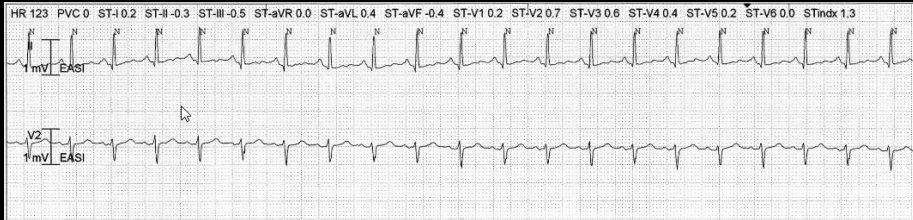


Sinus Tachycardia

- HR between > 100 bpm
- Regular R-R interval
- P wave for every QRS (1:1 ratio)
- PR between .12-.20 sec
- QRS between .06-.10 sec
- QT between .36-.44 sec (Shortens)

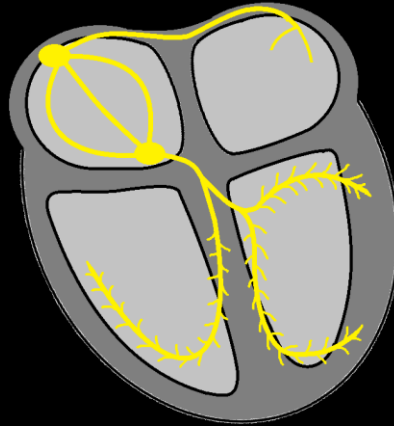


Sinus Tachycardia

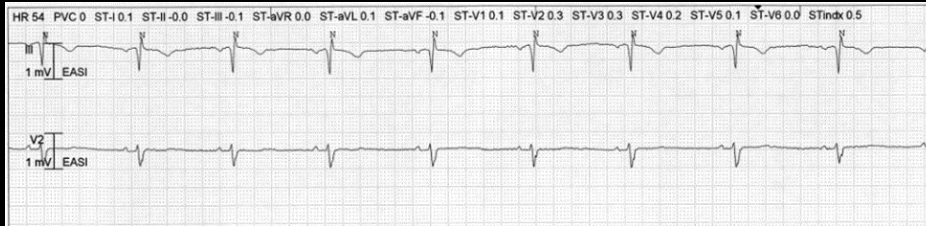


Sinus Bradycardia

- HR between < 60 bpm
- Regular R-R interval
- P wave for every QRS (1:1 ratio)
- PR between .12-.20 sec
- QRS between .06-.10 sec
- QT between .36-.44 sec (Lengthens)

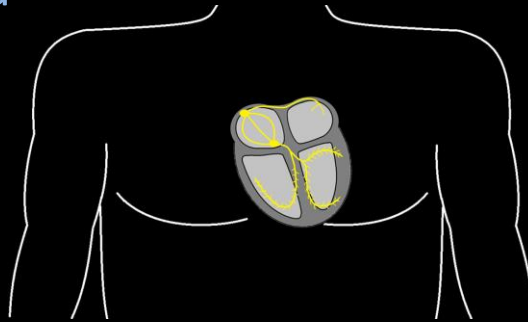


Sinus Bradycardia

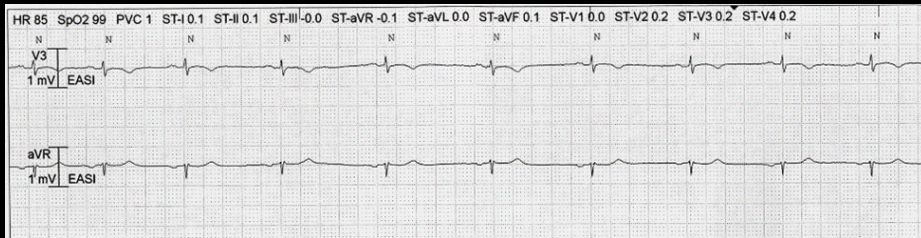


Sinus Arrhythmia

- HR between 60-100 bpm
- Regularly Irregular R-R interval
- P wave for every QRS (1:1 ratio)

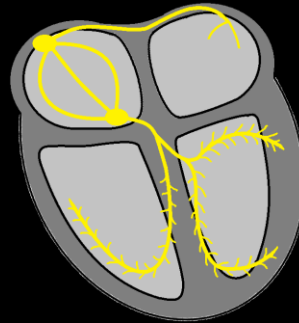


Sinus Arrhythmia

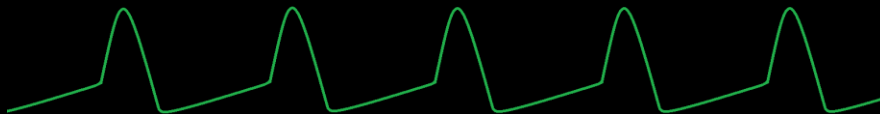


Sinus Exit Block

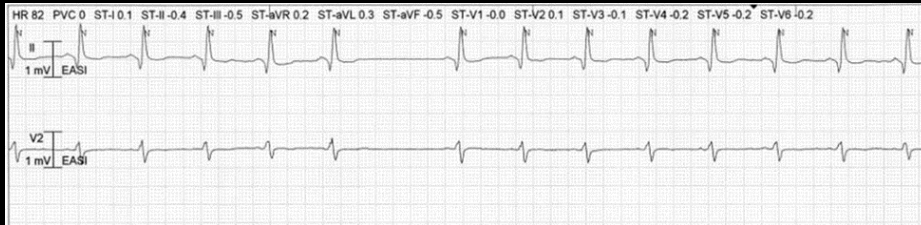
- Irregular R-R interval with block
- P wave for every QRS (1:1 ratio)



SA Node Pacemaker Cells:

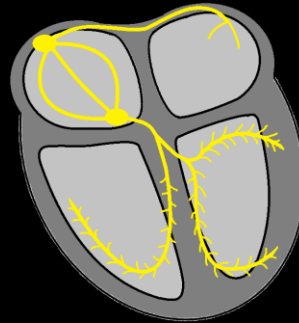


Sinus Exit Block



Sinus Arrest

- Irregular R-R interval with block
- P wave for every QRS (1:1 ratio)



SA Node Pacemaker Cells:



Sinus Arrest

