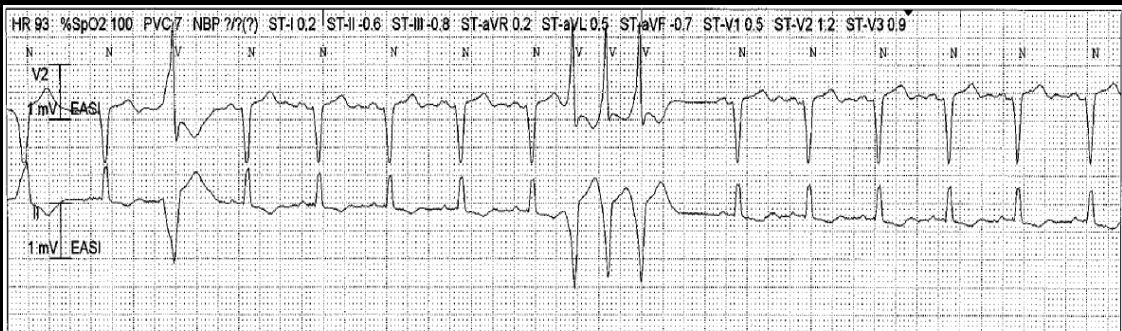


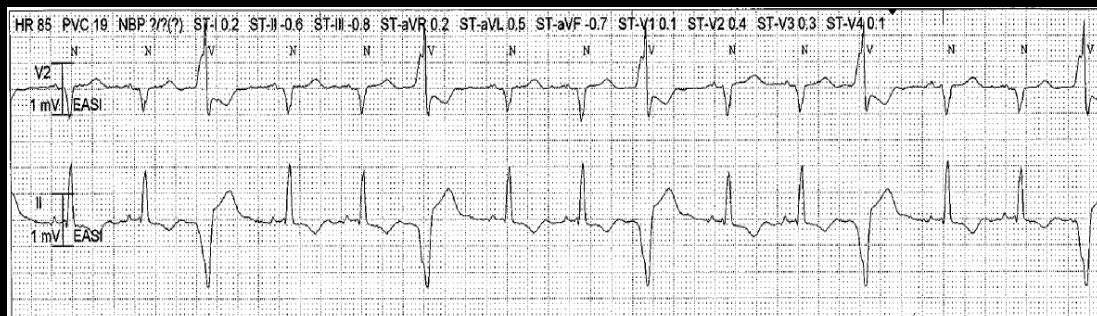
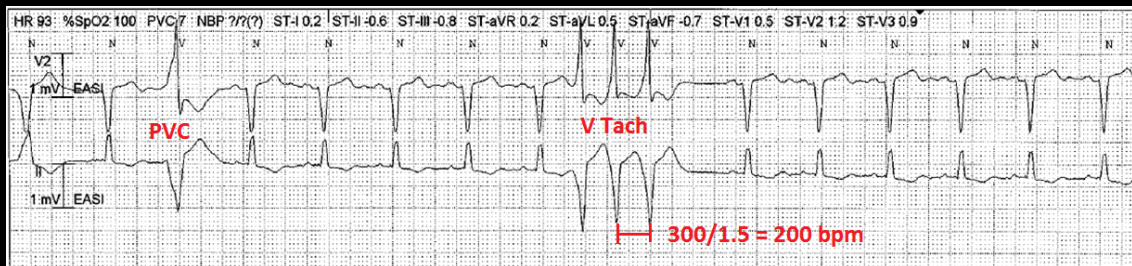
# Test Your Knowledge!



Correctly label the above strip.

## Sinus Rhythm with 3 beats of Ventricular Tachycardia.

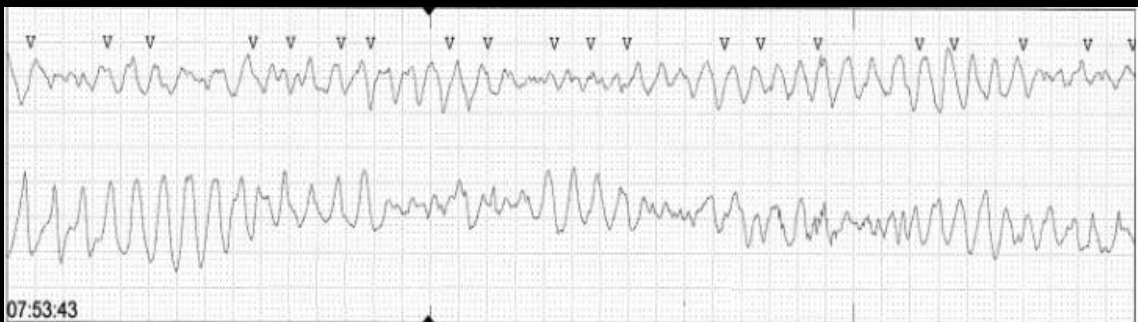
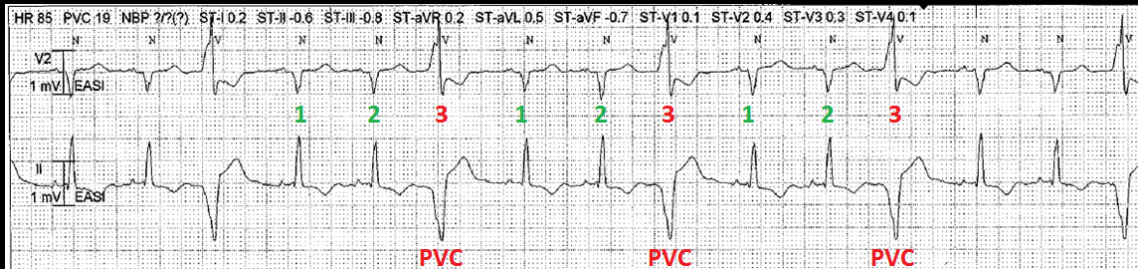
The overall rhythm is Sinus Rhythm. In this strip there is one PVC followed by 3 beats of V Tach. The rate of the V Tach is calculated by taking the number of large boxes between QRS waves (1.5) and dividing it into 300.  $300/1.5 = 200$  bpm.



Correctly label the above strip.

## Sinus Rhythm with Ventricular Trigeminy

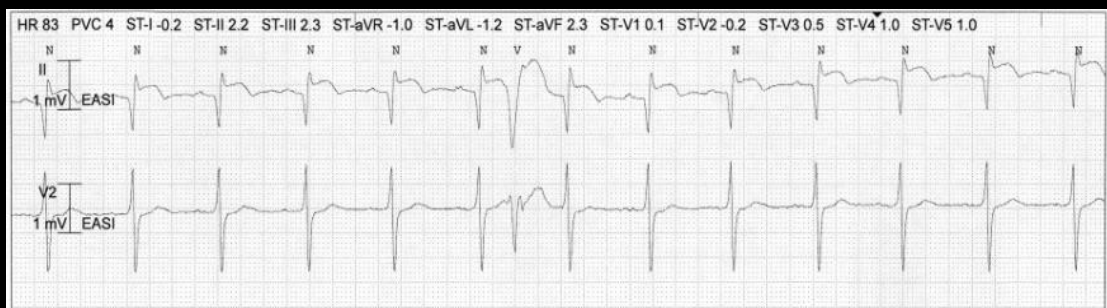
The patient is in Sinus Rhythm but there is a PVC every 3<sup>rd</sup> beat.



Correctly label the above strip.

## Torsades de Pointes

Torsades de Pointes, commonly just called "Torsades", is a lethal arrhythmia characterized by a twisting pattern.



Correctly label the above strip.

## R on T PVC

The PVC starts in the middle of the T wave of the preceding Sinus beat. This could cause a lethal arrhythmia. The PVC is also Interpolated because it doesn't disrupt the normal R-R regularity of Sinus Rhythm.

