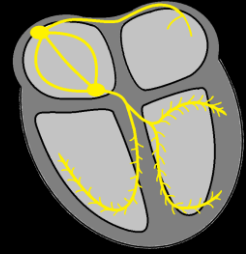


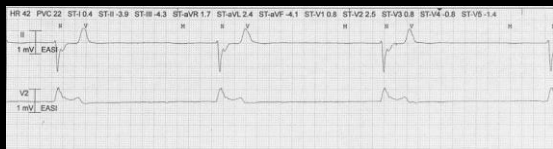
## Ventricular Rhythms

### Idioventricular Rhythm

- HR between 20-40 bpm
- Regular R-R interval
- No associated P waves
- Wide QRS

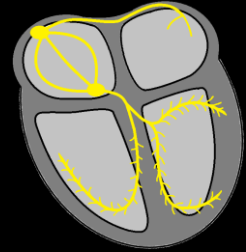


### Idioventricular Rhythm

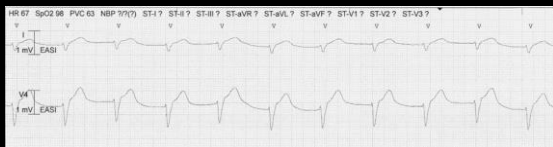


### Accelerated Idioventricular Rhythm

- HR between 40-100 bpm
- Regular R-R interval
- No associated P waves
- Wide QRS

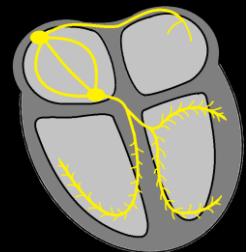


### Accelerated Idioventricular Rhythm



### Ventricular Tachycardia

- HR >100 bpm
- Regular R-R interval
- No associated P waves
- Wide QRS

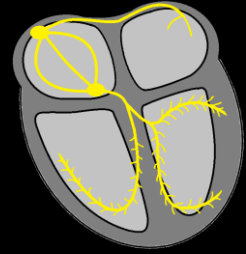


## Ventricular Tachycardia

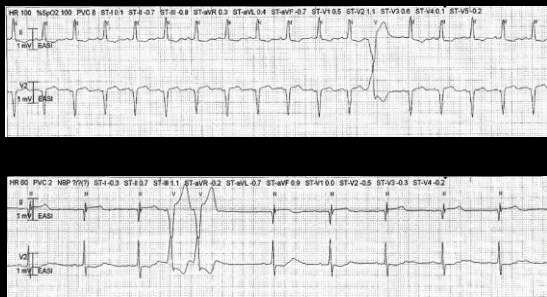


## Premature Ventricular Contractions

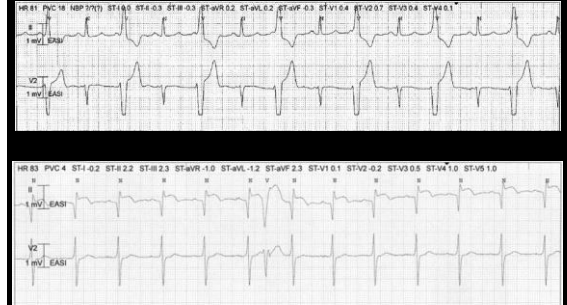
- QRS is wide and Bizarre
- No associated P waves
- T wave usually inverted
- Compensatory pause
- Uniform or multiform
- May occur as
  - Single PVC
  - Couplet/Pair
  - Bigeminal
  - Trigeminal
  - Quadrigeminal
  - Interpolated
  - R-on-T



## PVCs

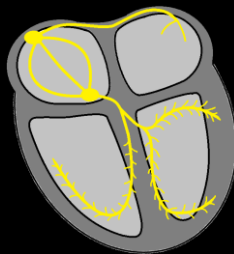


## PVCs



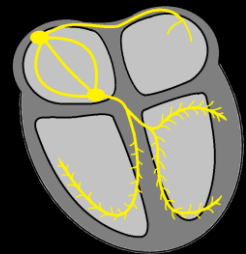
## R-on-T PVCs

- PVC occurs on T wave

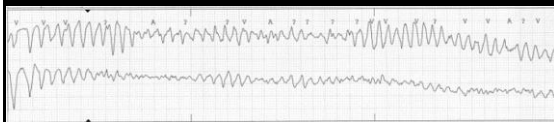


## Torsades de Pointes

- Twisting pattern
- Lethal arrhythmia

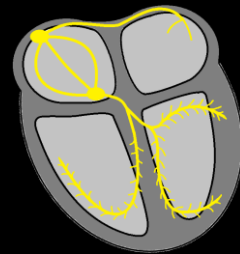


## Torsades de Pointes



## Ventricular Fibrillation

- HR 0 bpm
- Lethal arrhythmia



## Ventricular Fibrillation

